

Last page revision- March 31st, 1999

# TEXAS ACCESSIBILITY STANDARDS (TAS)

[TAS Table of Contents](#)

<b>8.</b>	<b>Libraries.</b>
-----------	-------------------

## 8.1 General.

(1) In addition to the requirements of 4.1 to 4.35, the design of all public areas of a library shall comply with 8, including reading and study areas, stacks, reference rooms, reserve areas, and special facilities or collections.

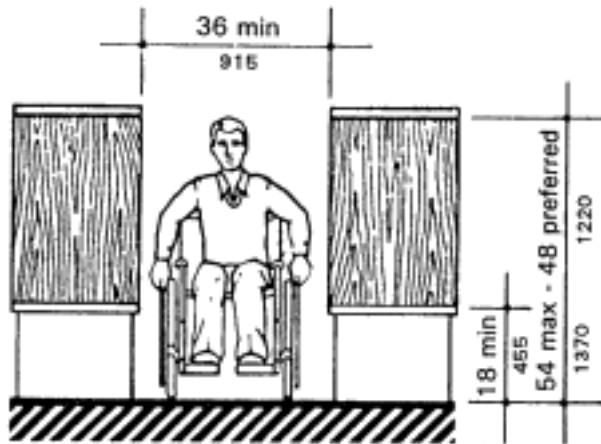
(2) *For mounting heights suitable in schools and other facilities used primarily by children see section 2.1.1.*

**8.2 Reading and Study Areas.** At least 5 percent or a minimum of one of each element of fixed seating, tables, or study carrels shall comply with 4.2 and 4.32. Clearances between fixed accessible tables and between study carrels shall comply with 4.3.

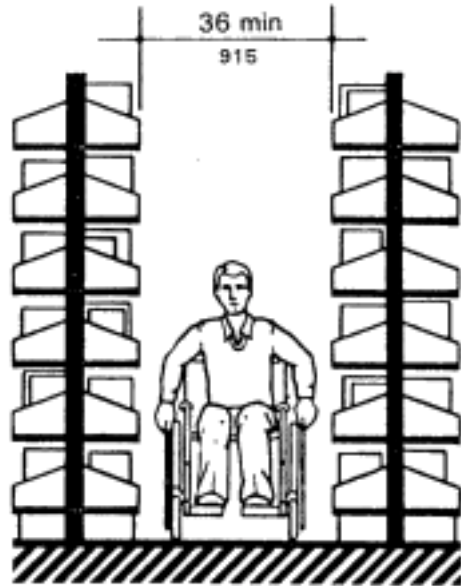
**8.3 Check-Out Areas.** At least one lane at each check-out area shall comply with 7.2(1). Any traffic control or book security gates or turnstiles shall comply with 4.13.

**8.4 Card Catalogs and Magazine Displays.** Minimum clear aisle space at card catalogs and magazine displays shall comply with Fig. 55. Maximum reach height shall comply with 4.2, with a height of 48 in (1220 mm) preferred irrespective of approach allowed.

**8.5 Stacks.** Minimum clear aisle width between stacks shall comply with 4.3, with a minimum clear aisle width of 42 in (1065 mm) preferred where possible. Shelf height in stack areas is unrestricted (see Fig. 56).



**Fig. 55**  
**Card Catalog**



**Fig. 56**  
**Stacks**



[Top of Page](#) | [TAS Table of Contents](#)